

MANA Board of  
Directors:

Maria Peinado,  
President

Monica Lepe-Negrete,  
Vice-President

Hon. Ruth  
Montenegro,  
Secretary

Maria Enriquez-  
Caldera, Treasurer

Monica Labrada,  
Membership Director

Rosyo Ramirez,  
Community  
Service Director

Keila Rodriguez,  
Scholarships Coord.

Juanita Salas  
Special Activities,  
Coord.

Denise Cabanilla &  
Martha Singh ,  
Hermanitas Co-Coord.

Dr. Martha Garcia,  
Public Relations  
Director

Alicia Armenta,  
Newsletter Editor

Rebecca Terrazas-  
Baxter  
Immediate Past  
President



April Newsletter 2015  
Issue 2



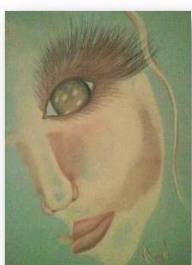
## De Imperial Valley

### Local Artists Featured at MANA's 3<sup>rd</sup> Annual Women, Vino and Art Mixer

**MANA held its 3<sup>rd</sup> Annual Women, Vino and Art Mixer** at the El Sol Center on Friday, March 13<sup>th</sup>. The event presented fine art from local artists, as well as wine tasting, gourmet treats and a raffle. This event is one of MANA's fundraisers, providing support for community service projects and youth programs. Special thanks to our 2015 Women, Vino & Art Sponsors – Barrio Logan Winery, Arnold Lovio, F3 Realty Group, Mr. Eduardo Jaime, New York Buffalo Wings & Ribs, Alicia Armenta, World Financial Group and the Arellano Family for offering the location. Event Coordinator, Monica Lepe-Negrete did a wonderful job once again this year.

MANA would like to thank the following local artists for exhibiting their work and helping to make our art mixer a success!

**Eddie Shiffer** - Mr. Shiffer studied art at the Academy of Arts University, where he received his Master's Degree in Fine Arts. While his focus is on oil paintings, much of his work uses non-traditional media such as wax, cloth and glass.



**Monica Munguia** - Ms. Munguia attended Arizona State University and majored in Fine Arts. She focuses on portraits painted with watercolor and charcoal. Her mission in creating or capturing portraits is to find underlying features spectators cannot see.

**Martha Perla** - Ms. Perla's passion is working with embossed aluminum and copper metal sheets. Her art has been displayed over the years at the Imperial County Film Festival and Art Show, the Mexican Consulate, Placita Olvera and Mercado Las Palomas.



**Sara Cachu** – Ms. Cachu is an artist, architect, portrait painter, muralist, designer, and teacher. Her main passion is the artistic painting, which is a merge of architecture and design.

## MANA Supports CUHS Robotic Team

MANA de Imperial recently provided a donation of \$350 to the Central Union High School District Robotics Team in support of their efforts to promote Science, Technology, Engineering and Math (STEM) education and career paths. Members of the CUHS Robotic Team recently designed and built a robot that was entered in an International Competition in Hawaii where they competed against teams from the United States, Japan and Mexico.



Pictured: Robotic Team members with advisors Jorge Garcia and Frank Wendell and Maria Peinado, President, MANA de Imperial Valley.



## Estrellas, Romance Y Vino – Noche de Poesia

Our 5<sup>th</sup> annual Estrellas, Romance y Vino, an evening dedicated to poetry reading, conversation and enjoyment, was held recently in El Centro. MANA members and guests sipped wine, shared poetry in English and/or Spanish and enjoyed the poetry of Karla Cordero, Pablo Neruda, Langston Hughes, Maya Angelou, Ana Castillo and Lucilla Carillo.

Our thanks to Juanita Salas, Special Activities Coordinator, for organizing the event and Maria Caldera for welcoming us all into her home.



## Announcements:

**MANA Scholarship Applications are now available! Scholarship deadline extended to Thurs. April 30<sup>th</sup>.**

MANA de Imperial Valley is a local chapter of a national non-profit Latina organization that empowers Latinas through leadership development, community service and advocacy. In an effort to promote higher education, MANA offers local competitive college and university scholarships to high school seniors as well as the Elsa Downs scholarship for IVC nursing students. The scholarship is available to any student committed to supporting the mission of MANA. Go to [www.ivmana.org](http://www.ivmana.org) to download the application. Applications are also be available at local high school counseling centers. For information contact Keila Rodriguez, Scholarship Coordinator at 760-457-7535.

### You are all invited to attend our monthly MANA meetings

MANA de Imperial Valley Board meets on the first Thursday of the month at 6 pm at the County Administration Building, Second floor Conference Room, 940 West Main St. El Centro.

### Upcoming Community Events

Feb. 20	MANA Scholarship Applications Open
April 24-May 8	Dress For Success - <i>see flyer last page</i>
June 18	Scholarship Recipient Reception
June 22 – Aug. 13	Nominations for Las Primeras
September 3	Las Primeras Media Mixer
September 23	Voter Registration Drive
October 16	Las Primeras Awards and Scholarship Fundraiser

### *Invite your friends to join MANA de Imperial Valley*

Dues payable each January  
Paypal available at [ivmana.org](http://ivmana.org)  
Regular: \$40  
Full-time student/Senior (60+): \$20  
Corporate: \$250

### *Questions, please contact Monica Labrada at lilialabrada@gmail.com*

MANA, a National Latina Organization, was founded in 1974 as the Mexican-American Women's National Association. MANA's original intent was to provide a voice for Mexican-American women at the national, state and local levels. The organization has since expanded into a diverse group of Latinas who continue to develop their abilities in political, social and professional fields.

### **Our Mission:**

MANA empowers Latinas through leadership development, community service and advocacy.

### We Appreciate the Support of Our Corporate Members



**Alfredo Negrete M. D. INC**



*Monica  
Lepe-Negrete, Esq.  
Attorney at Law*



# HELP DRESS FOR SUCCESS

with



MANA de Imperial Valley would like to invite you to help the less fortunate dress for success. Business attire of all sizes is needed. Proceeds to benefit the Sister Evelyn Mourey Center and other women shelter closets in Imperial County.  
Gently used or new clothing only please.



## **DONATION DROP-OFF INFORMATION**

Donations will be accepted from  
**April 24 – May 8th, 2015**

### ***Drop box available:***

Monday - Friday from 8am – 6pm  
@ 1050 Manuel Ortiz, El Centro, CA

### ***In-person drop-off:***

Saturday, 4/25 & 5/2 from 8am - 1pm @  
620 Mc Carran Dr, Imperial, CA.

Please contact Rosyo Ramirez at (760) 960-2354 or [rosyo\\_r@yahoo.com](mailto:rosyo_r@yahoo.com) to make other drop-off or pick-up arrangements.

*Let's help make this another successful annual contribution to our community.*